

# The **Somerset B** – First Floor Master Suite

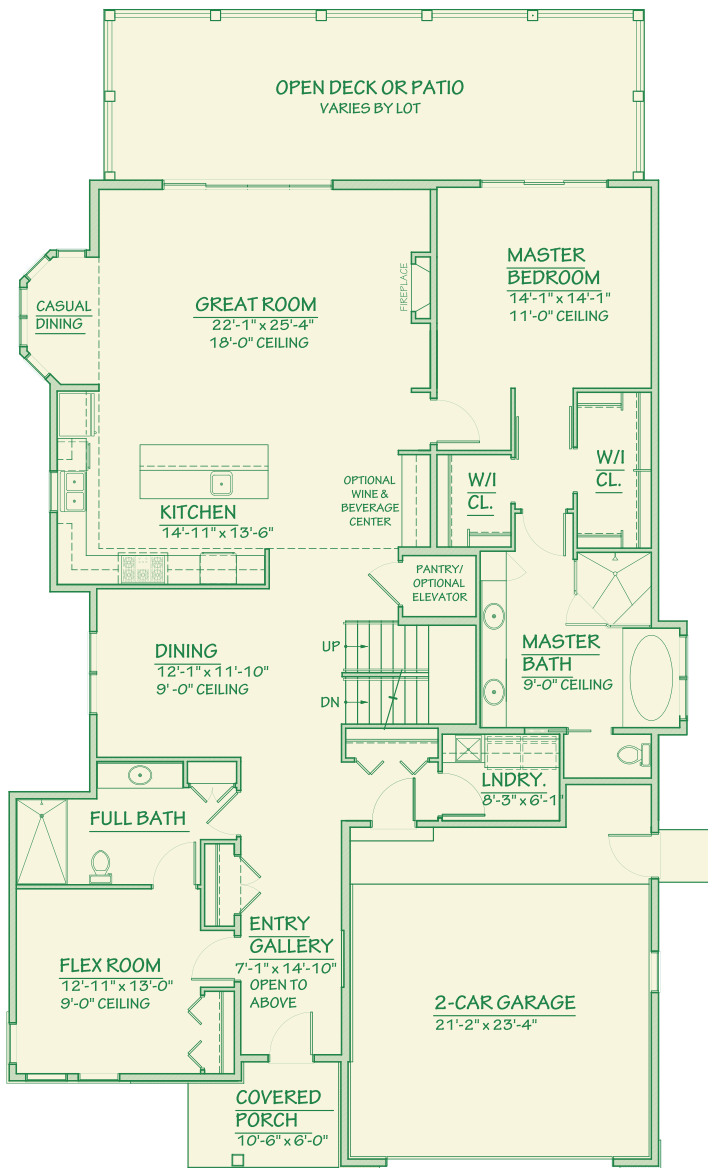
**3 to 5 bedrooms, 4 full baths, 2-car garage**

- 3,373 square feet of living space, plus a full basement
- Open floor plan with flexible design
- 9-foot first floor ceilings
- 2-story great room with 18-foot ceiling
- Oversized gourmet kitchen with casual eating area & walk-in pantry
- First floor master suite with dual walk-in closets & glamour bath
- First floor flex room – perfect for office, den or guest room
- Second floor with 2 bedrooms, 2 full baths, & lounge area or 4th bedroom
- Plentiful storage space
- Rear patio or deck (per lot)
- Optional 3-car garage available
- Universal design features – wide doorways, zero barrier shower entry, optional elevator area

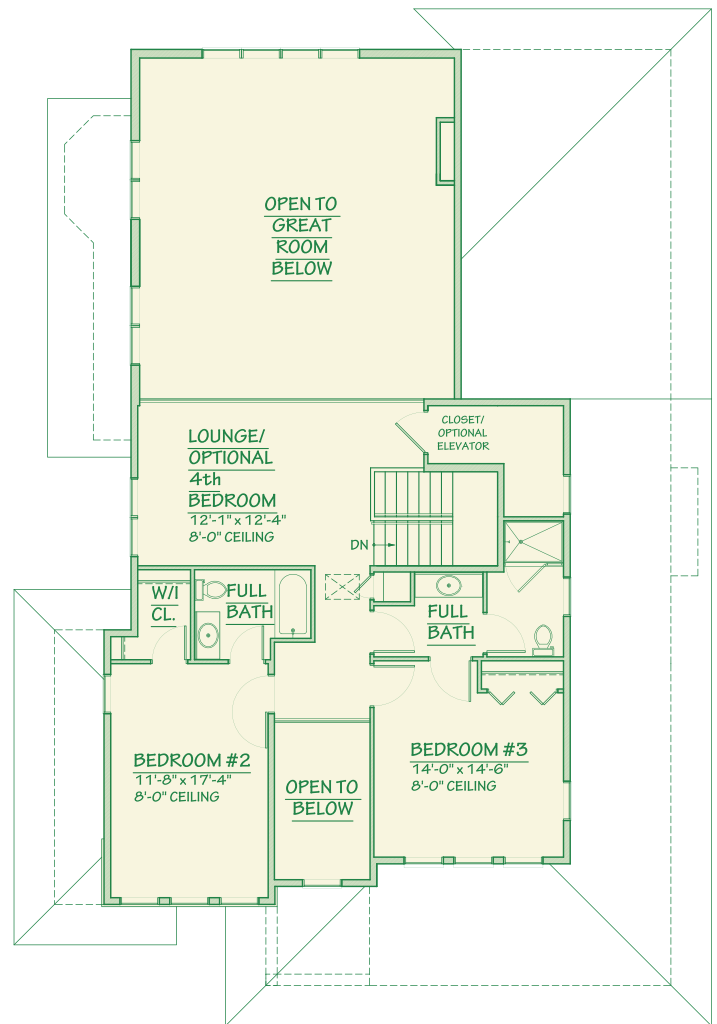


# The Somerset B

**First Floor Master Suite**  
**3 to 5 bedrooms**  
**4 full baths**  
**2-car garage**



2,331 Sq. Ft.



**1,042 Sq. Ft.**



**Main Office: 216-831-9110**  
**Sales Associate: 216-213-0423**



Prices, plans, materials, products, appliances and standard features are subject to change without notice. The plans and specifications that are part of your Purchase Agreement with Kertes Homes will describe the type of materials, standard features and options selected by you to be included in your new home at the contract price. Builder reserves the right to modify floor plans, elevations, colors and materials without notice. All dimensions and features are approximate and are subject to field variation and/or change without notice. If any discrepancy arises between these plans and the architect's plans, the architect's plans shall prevail.

